

Tobii Dynavox Beam Setup Guide

Tobii Dynavox Beam is a mobile application that allows users to send and receive text messages using Communicator 5 through a Bluetooth connection with their Android phone.

Set up Beam on a Windows PC to Use with Communicator 5

On Android Phone

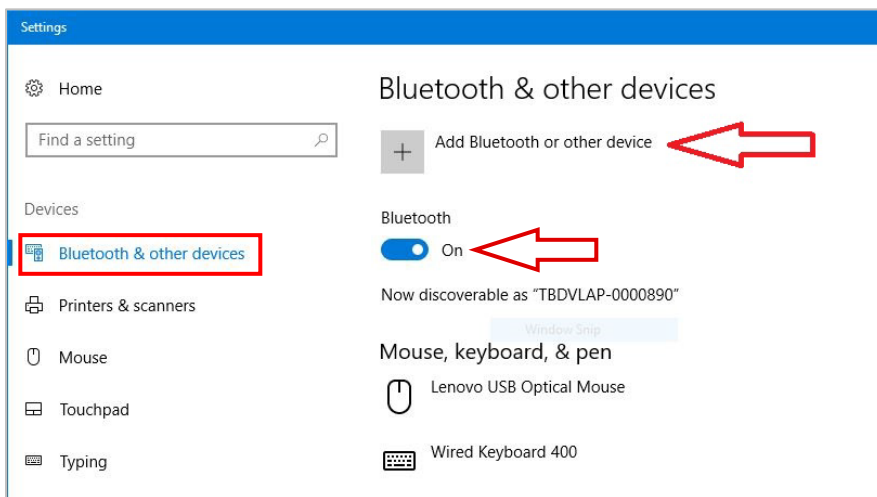
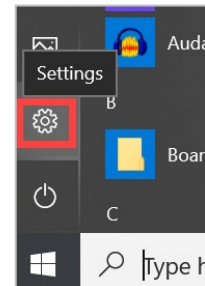
1. Open the Google **Play Store**
2. Search for **Tobii Dynavox** in the Google Play store and **Beam** will appear as one of the apps available for download
3. Download and install Beam
4. Make sure your phone's Bluetooth is On and Visible or Discoverable



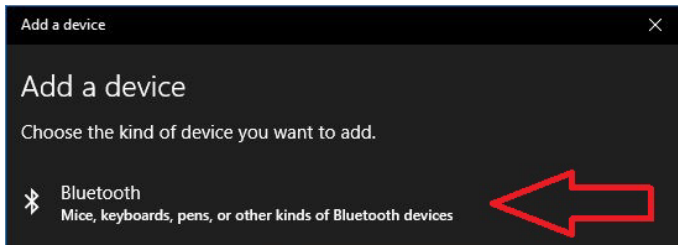
one of

On Windows PC

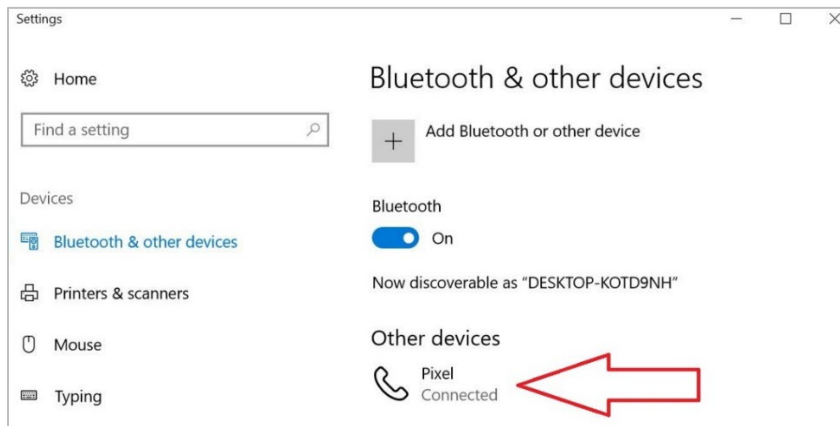
1. Open Windows **Settings** on the Windows PC
2. Select **Devices**
3. Select **Bluetooth & other devices** on the left side of the screen
4. Make sure Bluetooth is turned **on**
5. Select **Add Bluetooth & other devices**



6. Select **Bluetooth** on the next screen

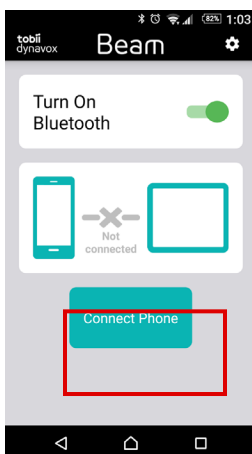


7. Follow the steps on the screen to pair your phone with your PC. Once the pairing is complete, you will see your phone listed under **Other devices**.



On Android Phone

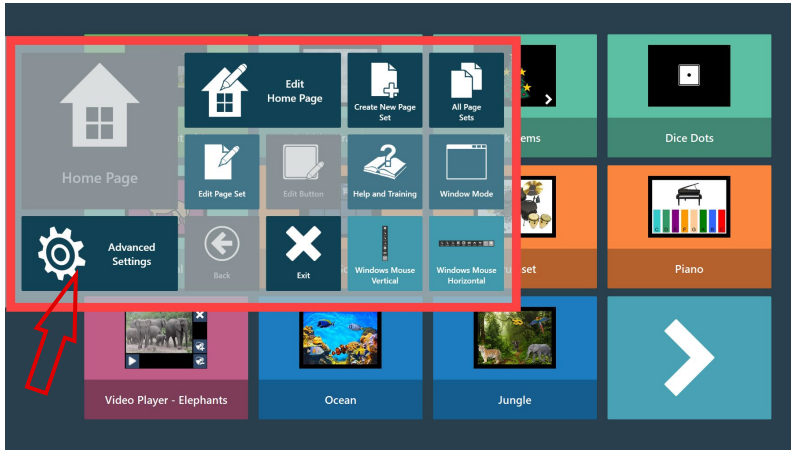
1. Open the Beam app, select **OK** on the privacy message screen
2. Select **ALLOW** in all prompts for Beam to access the information on your phone (media, text message, contact etc.)
3. Select **Connect Phone**



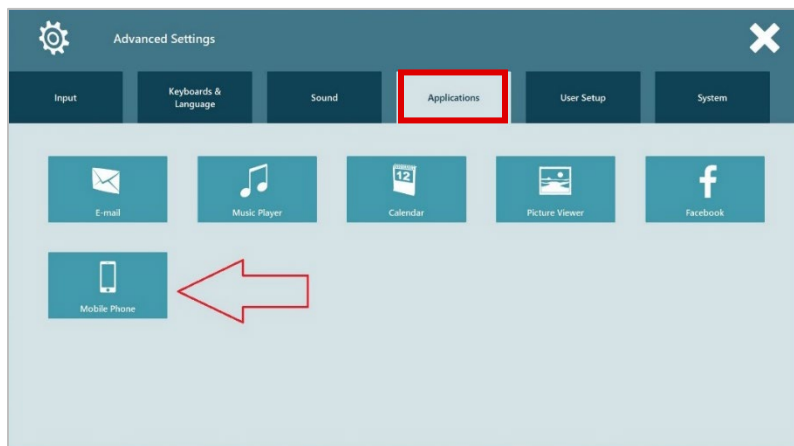
4. Select **YES** on the next **Bluetooth permission request** screen

On Windows PC

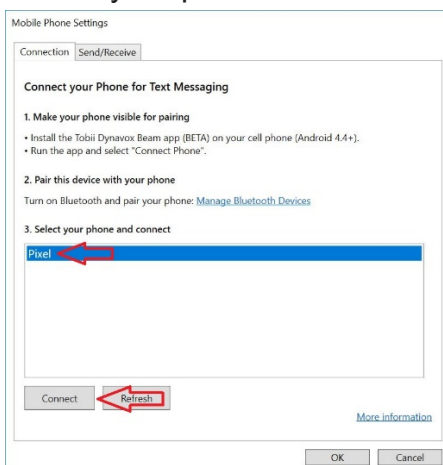
1. Open Communicator 5 
2. Right click to open the **Caregiver Menu** and go to **Advanced Settings**



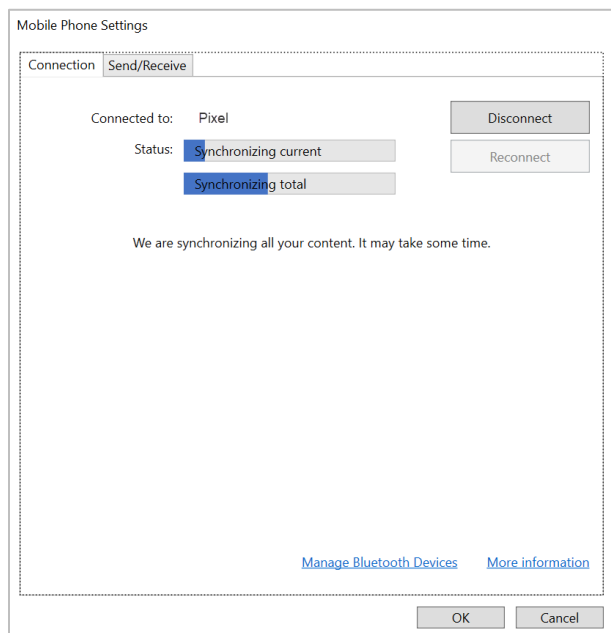
3. Select the **Applications** tab and choose **Mobile Phone**



4. Locate your phone in the list and select **Connect**



5. You will receive a pop up on your phone telling you that it is connecting. The next screen on Communicator 5 will show it is synchronizing. **Note:** Synchronizing typically takes a good amount of time. The more text messages stored on your phone, the longer it will take to synchronize.



6. When synchronizing is complete, the status changes to Connected. Select **OK** and you can now send and receive text messages. **Note:** The phone must remain within 30 feet of the PC with no walls between the two.