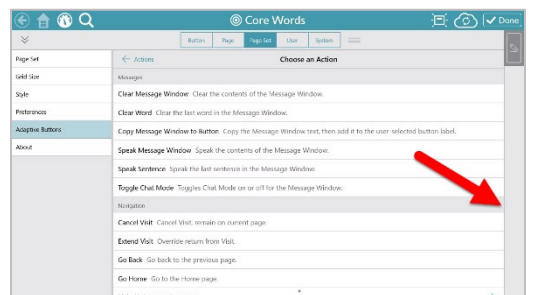
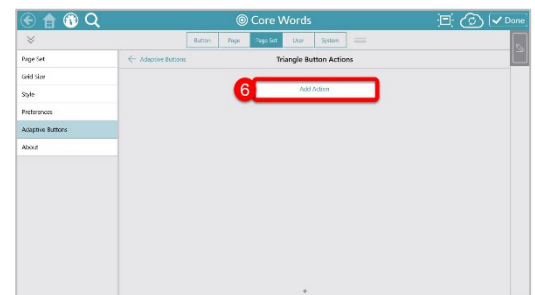
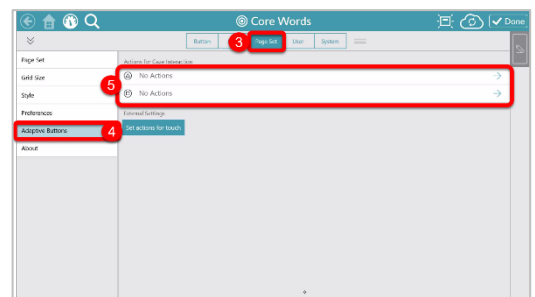
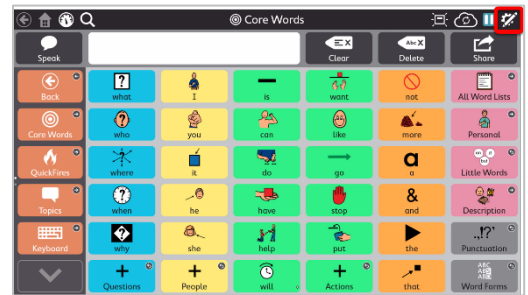


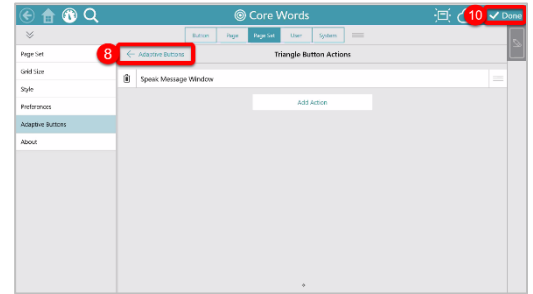
# Adaptive Buttons in Snap Core First

## Setting up the Eye Gaze Actions for the Adaptive Buttons

1. Open **Snap Core First**
2. Select **Edit**
3. Select **Page Set**
4. Select **Adaptive Buttons**
5. Select the **triangle or square** button
6. Select **Add Action**
7. Scroll down and **select the desired action**



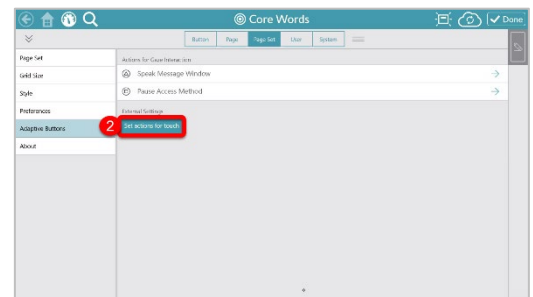
8. Select the **back arrow** to the Adaptive Button Menu
9. **Repeat** steps 5-8 for the other button
10. Select **Done**



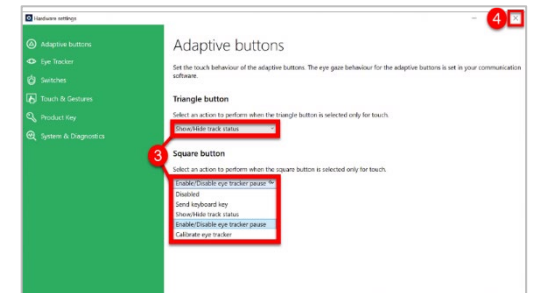
## Setting up the Touch Actions for the Adaptive Buttons

### From Snap Core First:

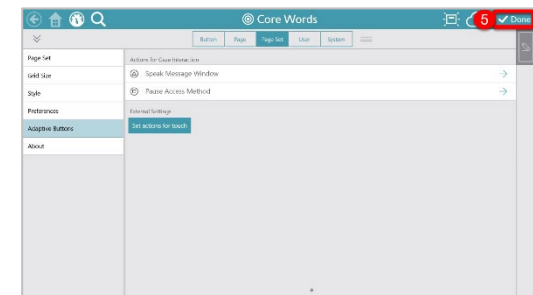
1. Follow steps 2-4 above
2. Select **Set actions for touch**, this will open the Hardware Settings software




3. Use the **drop-down menus** to select the touch actions for the adaptive buttons
4. Select the **X** to exit the software



5. Return to Snap Core First, select **Done**



### From the desktop of the I-13 or I-16:

1. Open the **Hardware Settings** software 
2. Use the **drop-down menu** to select the actions for the caregiver
3. Select the **X** to exit the software